

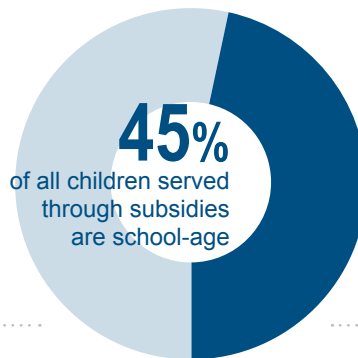


# National Data Profile of Federal Supports for Afterschool and Summer Child Care

There are two major sources of federal funding and supports for afterschool and summer child care: the Child Care and Development Fund (CCDF) and the 21st Century Community Learning Centers (21st CCLC) program. This data profile focuses primarily on the Child Care and Development Fund.

The federal **Child Care and Development Fund (CCDF)** is a block grant program administered by the U.S. Department of Health and Human Services. It is the primary source of federal funding for child care subsidies for low-income working parents and federal funding to improve child care quality. Lead agencies administer the program at the state level.

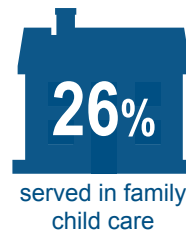
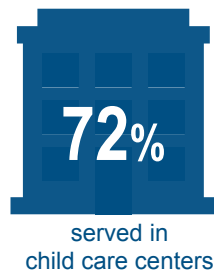
## School-Age Children (5 through 12 years old) Served Through Subsidies



**\$454**

average monthly subsidy for  
school-age child care

Average of  
**784,889**  
school-age  
children served  
each month



**12**

states and territories saw a double-digit  
percent increase in the number of school-  
age children served during the summer  
months (June-August)



21st Century  
Community Learning  
Centers Program  
**2019-2020**

**1,208,293\***

pre-K-12 students  
served

**10,496**

centers

*\*In addition to the students served during the academic year, 356,145 pre-K-12 students were served during the summer of 2019. This total is not disaggregated by state.*

# State/Territory Policies that Support School-Age Child Care Access and Quality



**50** State/Territory CCDF Lead Agencies require training and professional development to support the positive development of school-age children



**23** State/Territory CCDF Lead Agencies offer grants/contracts for child care slots

**12** Use grants/contracts to increase the supply and/or quality of school-age child care



**45** Consumer education websites show the age range of children served by providers

**35** Consumer education websites show whether providers accept CCDF subsidies

**31** Consumer education websites include license-exempt CCDF providers

**50** States have a statewide afterschool network

**37** States have a National AfterSchool Association affiliate

*In 29 states, the same organization serves as the statewide afterschool network and the National AfterSchool Association state affiliate*



Data derived from ACF 801 preliminary data FY 2020; Child Care and Development Fund Plans FY 2022-2024; [www.childcare.gov](http://www.childcare.gov); U.S. Department of Education; and Afterschool Alliance.