



National Center on Tribal Early Childhood Development

Introduction to the Child Care and Development Fund Final Rule for New Administrators

Office of Child Care's 2018 American Indian and
Alaska Native Regional Conference



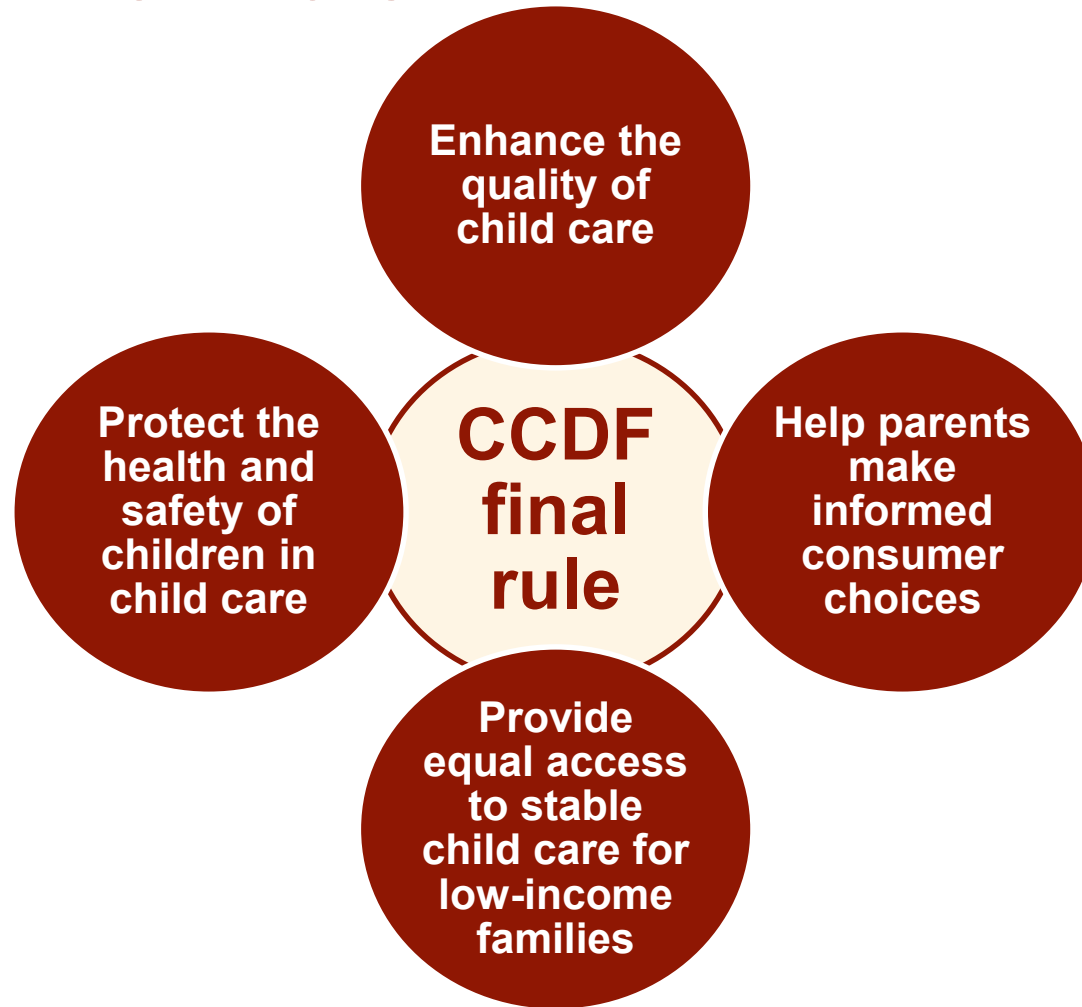
Agenda

Major provisions of the Child Care and Development Fund (CCDF) final rule

- ◆ Protect the health and safety of children in child care
- ◆ Help parents make informed consumer choices
- ◆ Enhance the quality of child care
- ◆ Provide equal access to stable child care for low-income families



CCDF Final Rule



Child Care and Development Fund (CCDF) Program, 81 Fed. Reg. 67,438, 67,441 (Sept. 30, 2016) (codified at 45 C.F.R. pt. 98).

Protect the Health and Safety of Children in Child Care



Health and Safety Overview

- ◆ Applies to **all AI/AN CCDF grantees**, regardless of allocation size and regardless of whether they offer direct services.
- ◆ Includes health and safety standards (such as those for immunizations), training, monitoring, and criminal background checks.
- ◆ Exempts AI/AN grantees from the requirement to have licensing applicable to child care services.
- ◆ Allows AI/AN grantees to exempt relative care providers from the health and safety requirements.



Requirements for All AI/AN CCDF Grantees

- ◆ Health and safety **standards** for required topics that are subject to monitoring
- ◆ Age-appropriate **immunizations**
- ◆ Standards that address **group size** limits, the **ratio** between the number of children and the number of caregivers, and required **qualifications** for caregivers in child care settings
- ◆ Preservice or orientation **training** and ongoing training on the required topics
- ◆ **Monitoring** of CCDF providers, with flexibility to propose an alternative monitoring strategy
- ◆ Comprehensive **criminal background checks** for all CCDF providers, with flexibility to propose an alternative approach

Child Care and Development Fund, 45 C.F.R. §§ 98.41, 98.83 (2016).



Required Health and Safety Topics


1. Prevention and control of infectious diseases (including immunizations)
2. Prevention of sudden infant death syndrome and use of safe sleeping practices
3. Administration of medication, consistent with standards for parental consent
4. Prevention of and response to emergencies due to food and allergic reactions
5. Building and physical premises safety
6. Prevention of shaken baby syndrome, abusive head trauma, and child maltreatment
7. Emergency preparedness and response
8. Handling and storage of hazardous materials and appropriate disposal of biocontaminants
9. Appropriate precautions in transporting children, if applicable
10. Pediatric first aid and cardiopulmonary resuscitation
11. Recognition and reporting of child abuse and neglect

Child Care and Development Fund, 45 C.F.R. § 98.41 (2016).

Activity

- ◆ Locate the health and safety section of your CCDF Plan
- ◆ Share with a **partner or group**
 - In what ways is your program already aligned to the requirements of the CCDF final rule?
 - Are there areas where action is needed to meet the requirements?

CHILD CARE AND DEVELOPMENT FUND
for
TRIBE: _____
FFY 2017-2019



This Plan describes the CCDF program to be administered by the Tribes for the period 10/1/2014 – 9/30/2019. As provided for in the applicable statutes and regulations, the Tribal Lead Agency has the flexibility to modify this program at any time, including amending the options selected or described herein.

For purposes of simplicity and clarity, the specific provisions printed herein of applicable laws and regulations are sometimes paraphrases of, or excerpts and incomplete quotations from, the full text. The Tribal Lead Agency acknowledges its responsibility to adhere to them regardless of these modifications.

Public reporting burden for this collection of information is estimated to average 120 hours per response, including the time for reviewing instructions, gathering and maintaining the data needed, and reviewing the collection of information. An agency may not conduct or sponsor, and a person is not required to respond to, a collection of information unless it displays a currently valid OMB control number.

(Form ACF 118-A; OMB Approval Number: XXXX-XXXX, expires XX/XX/XXXX)



Reflection

How is your AI/AN CCDF program tracking progress toward meeting the health and safety requirements?

Help Parents Make Informed Consumer Choices



Consumer Education Overview

- ◆ Applies to AI/AN grantees with **medium and large allocations**.
- ◆ Includes the following:
 - Provider-specific information
 - Additional consumer education information for parents, providers, and the public
 - Consumer statement
 - Parental compliant hotline
- ◆ All AI/AN grantees are **exempt** from the requirement to build a consumer education website.





Requirements for Medium- and Large-Allocation AI/AN Grantees

- ◆ Collect and disseminate information regarding the following:
 - Tribal policies and procedures
 - Provider-specific information
 - Aggregate annual data on death, serious injuries, and instances of child abuse
 - Referrals to local child care resource and referral organizations
 - How parents can contact the AI/AN Lead Agency or its designee and other programs to help them understand consumer education information
 - Availability of child care and related services
 - Research and best practices
 - Policies regarding social-emotional behavioral health
 - Developmental screening
- ◆ Develop and share a consumer education statement for CCDF families.

Child Care and Development Fund, 45 C.F.R. § 98.33 (2016).



Parental Complaints


AI/AN CCDF grantees with **medium and large allocations** are required to establish or designate a **hotline or similar reporting process** that allows parents to submit complaints about child care providers.

Child Care and Development Fund, 45 C.F.R. § 98.32 (2016).

Activity

- ◆ Locate the consumer education section of your CCDF Plan
- ◆ Share with a **partner or group**
 - In what ways is your program already aligned to the requirements of the CCDF final rule?
 - Are there areas where action is needed to meet the requirements?

CHILD CARE AND DEVELOPMENT FUND
for
TRIBE: _____
FFY 2017-2019



This Plan describes the CCDF program to be administered by the Tribes for the period 10/1/2016 - 9/30/2019. As provided for in the applicable statute and regulations, the Tribal Lead Agency has the flexibility to modify the program at any time, including amending the options selected or described herein.

For purposes of simplicity and clarity, the specific provisions printed herein of applicable laws and regulations are sometimes paraphrases of, or excerpts and incomplete quotations from, the full text. The Tribal Lead Agency acknowledges its responsibility to adhere to them regardless of these modifications.

Public reporting burden for this collection of information is estimated to average 120 hours per response, including the time for reviewing instructions, gathering and maintaining the data needed, and reviewing the collection of information. An Agency may not conduct or sponsor, and a person is not required to respond to, a collection of information unless it displays a currently valid OMB control number.

(Form ACF 118-A; OMB Approval Number: XXXX-XXXX, expires XX/XX/XXXX)



Reflection

How is your AI/AN CCDF program tracking progress toward meeting the consumer education requirements?

Enhance the Quality of Child Care



Quality Improvement Overview

- ◆ **All** AI/AN grantees are subject to the following requirements:
 - An increasing quality set-aside
 - Reporting on quality expenditures each fiscal year
 - Preservice or orientation training and ongoing professional development on health and safety standards and child development
- ◆ AI/AN grantees with **medium and large allocations** are also subject to the following requirements:
 - An infant/toddler set-aside, starting in FY 2019
 - A description of strategies to increase the supply and improve the quality of child care services for certain children
- ◆ AI/AN grantees are **exempt** from the requirement to submit the Quality Progress Report (QPR).

Quality Spending Requirements

| Quality Spending | FY 2017 | FY 2018 | FY 2019 | FY 2020 | FY 2021 | FY 2022 and ongoing |
|---|-----------|-----------|------------|------------|------------|---------------------|
| % Quality set-aside (all) | 4% | 7% | 7% | 8% | 8% | 9% |
| % Infant/toddler set-aside (medium and large) | 0% | 0% | 3% | 3% | 3% | 3% |
| Total % quality (small) | 4% | 7% | 7% | 8% | 8% | 9% |
| Total % quality (medium and large) | 4% | 7% | 10% | 11% | 11% | 12% |

Child Care and Development Fund, 45 C.F.R. § 98.83 (2016).



Allowable Quality Improvement Activities

Quality funds must be used to carry out **at least one** of the following:

- ◆ Training and professional development
- ◆ Early learning and development guidelines
- ◆ Tiered quality rating and improvement system
- ◆ Quality and supply of infant/toddler services
- ◆ Child care resource and referral services
- ◆ Licensing and health and safety requirements
- ◆ Quality evaluation
- ◆ Accreditation
- ◆ High-quality program standards
- ◆ Other measurable quality activities as determined by the AI/AN Lead Agency

Child Care and Development Fund, 45 C.F.R. § 98.53 (2016).

Training and Professional Development

- ◆ **All AI/AN grantees** must describe in the CCDF Plan their established requirements for the following:
 - **Accessible preservice or orientation** training in health and safety standards and child development.
 - **Ongoing, accessible professional development**, including the minimum hours required annually, that
 - maintains and updates health and safety training standards;
 - incorporates social-emotional behavior intervention models for children; and
 - to the extent practicable, is appropriate for different age groups, English learners, and children with developmental delays and disabilities.
- ◆ All AI/AN grantees are **exempt** from the requirement to have a professional development framework.

Child Care and Development Fund, 45 C.F.R. §§ 98.44, 98.83 (2016).

Building the Supply of High-Quality Care

AI/AN grantees with **medium and large allocations** must provide a description of their strategies to increase the supply and improve the quality of child care services for

- ◆ children in underserved areas,
- ◆ infants and toddlers,
- ◆ children with disabilities, and
- ◆ children who receive care during nontraditional hours.

Child Care and Development Fund, 45 C.F.R. § 98.16 (2016).




Activity

- ◆ Locate the quality section of your CCDF Plan
- ◆ Share with a **partner or group**
 - In what ways is your program already aligned to the requirements of the CCDF final rule?
 - Are there areas where action is needed to meet the requirements?

CHILD CARE AND DEVELOPMENT FUND
for
TRIBE: _____

FFY 2017-2018



This Plan describes the CCDF program to be administered by the Tribes for the period 10/1/2018 – 9/30/2018. As provided for in the applicable statute and regulations, the Tribal Lead Agency has the flexibility to modify this program at any time, including amending the options selected or described herein.

For purposes of simplicity and clarity, the specific provisions printed herein of applicable laws and regulations are sometimes paraphrased or, in excerpts and incomplete quotations from, the full text. The Tribal Lead Agency acknowledges its responsibility to adhere to them regardless of these modifications.

Public reporting burden for this collection of information is estimated to average 120 hours per response, including the time for reviewing instructions, gathering and maintaining the data needed, and reviewing the collection of information. An agency may not conduct or sponsor, and a person is not required to respond to, a collection of information unless it displays a currently valid OMB control number.

(Form ACF 118-A; OMB Approval Number: XXXX-XXXX, expires XX/XX/XXXX)



Reflection

How is your AI/AN CCDF program tracking progress toward meeting the quality requirements?

Provide Equal Access to Stable Child Care for Low-Income Children





Eligibility Overview

- ◆ Requirements for **all** AI/AN grantees
 - Eligibility definitions of “Indian child” and service area
 - Dual eligibility for AI/AN children
- ◆ Requirements for grantees with **medium and large** allocations
 - Additional eligibility criteria
 - Stable financial assistance
 - Parental choice
 - Payment rates
 - Payment practices

Eligibility Requirements for Small-Allocation Grantees

- ◆ Eligibility criteria:
 - Define “Indian child”
 - Define the service area
- ◆ Small-allocation grantees have **flexibility** to set their own eligibility requirements

Child Care and Development Fund, 45 C.F.R. § 98.83 (2016).



Eligibility Requirements for Medium- and Large-Allocation Grantees

- ◆ Eligibility criteria:
 - Younger than 13 years old,
 - Considered an “Indian child,”
 - Resides within the service area,
 - Family income less than 85 percent of the grantee median income for families of the same size, and
 - Parent(s) working, enrolled in job training or education, or receiving or need to receive protective services.

- ◆ Categorical eligibility: Option to consider any Indian child eligible if the tribe’s median income is below 85 percent of the state median income, provided that services still go to those with highest need.

Child Care and Development Fund, 45 C.F.R. §§ 98.20, 98.21, 98.81 (2016).



Eligibility Requirements for Medium- and Large-Allocation Grantees (continued)

◆ Stable financial assistance

- Promote continuity of care via 12-month eligibility.
- Support continuity during eligibility periods.
- Provide a graduated phase-out.
- Ensure family copayments do not increase within the 12-month eligibility period (with the exception of graduated phase-out).
- Improve access for vulnerable children and families.

Child Care and Development Fund, 45 C.F.R. §§ 98.20, 98.21 (2016).

Parental Choice Requirements

- ◆ **Large-allocation grantees:** Must provide the parent(s) of each CCDF eligible child who receives assistance with the choice to either enroll the child with an eligible child care provider that has a grant or contract for such services, **or** to receive a child care certificate.
- ◆ **Medium- and small-allocation grantees:** Exempt from the requirement to provide a certificate as an option for parents.

Child Care and Development Fund, 45 C.F.R. §§ 98.30, 98.83 (2016).



Equal Access Requirements for Medium- and Large-Allocation Grantees

- ◆ Provision of direct child care services
- ◆ Setting payment rates for child care services
- ◆ Payment practices and timeliness of payments to providers
- ◆ Supply-building strategies to meet the needs of certain populations




Child Care and Development Fund, 45 C.F.R. § 98.45 (2016).

Activity

- ◆ Locate the stable financial assistance and equal access sections of your CCDF Plan
- ◆ Share with a **partner or group**
 - In what ways is your program already aligned to the requirements of the CCDF final rule?
 - Are there areas where action is needed to meet the requirements?

CHILD CARE AND DEVELOPMENT FUND
for
TRIBE: _____
FFY 2017-2018



This Plan describes the CCDF program to be administered by the Tribes for the period 10/1/2016 - 9/30/2018. As provided for in the applicable statutes and regulations, the Tribal Lead Agency has the flexibility to modify this program at any time, including amending the options selected or described herein.

For purposes of simplicity and clarity, the specific provisions printed herein of applicable laws and regulations are sometimes paraphrases of, or excerpts and incomplete quotations from, the full text. The Tribal Lead Agency acknowledges its responsibility to adhere to them regardless of these modifications.

Public reporting burden for this collection of information is estimated to average 220 hours per response, including the time for reviewing instructions, gathering and maintaining the data needed, and reviewing the collection of information. An agency may not conduct or sponsor, and a person is not required to respond to, a collection of information unless it displays a currently valid OMB control number.

(Form ACF 118-A; OMB Approval Number: XXXX-XXXX, expires XX/XX/XXXX)



Reflection

How is your AI/AN CCDF program tracking progress toward meeting the stable financial assistance and equal access requirements?



National Center on Tribal Early Childhood Development

Next:

Introduction to Fiscal Management for
New Administrators

Networking and Lunch Break

