



State & Territory CCDF Administrators Meeting

July 30–August 1, 2019 • Hyatt Regency Crystal City • Arlington, Virginia

Supporting School-Age Child Care: An Exploration of the Intersection between CCDF and 21st CCLC

Katari Coleman, Project Director, NCASE

Tony Streit, Principal Investigator, NCASE

Jeanie Mills, Senior TTA Specialist, NCSIA & NCASE Partner

Session Objectives

- ◆ Describe elements of School-Age Child Care and Out-of-School Time (OST) Programming
- ◆ Build an awareness of 21st Century Community Learning Center (21st CLCC) Funding for Out of School Time Programs
- ◆ Compare 21st CCLC and CCDF School-Age Child Care
- ◆ Consider the ways states are currently promoting cross-system collaboration for School-Age Child Care
- ◆ Identify strategies to leverage additional opportunities within your state to support and coordinate services
- ◆ Share state examples of collaborative efforts of support and coordination of School-Age Child Care

Agenda

- ◆ Introductions
- ◆ Working Definitions
- ◆ School-Age Child Care Supply
- ◆ 21st Century Community Learning Centers (21st CLCC)
- ◆ CCDF and 21st CCLC Common Topics
- ◆ Collaborative State Examples

Welcome

- ◆ Share your role with one another

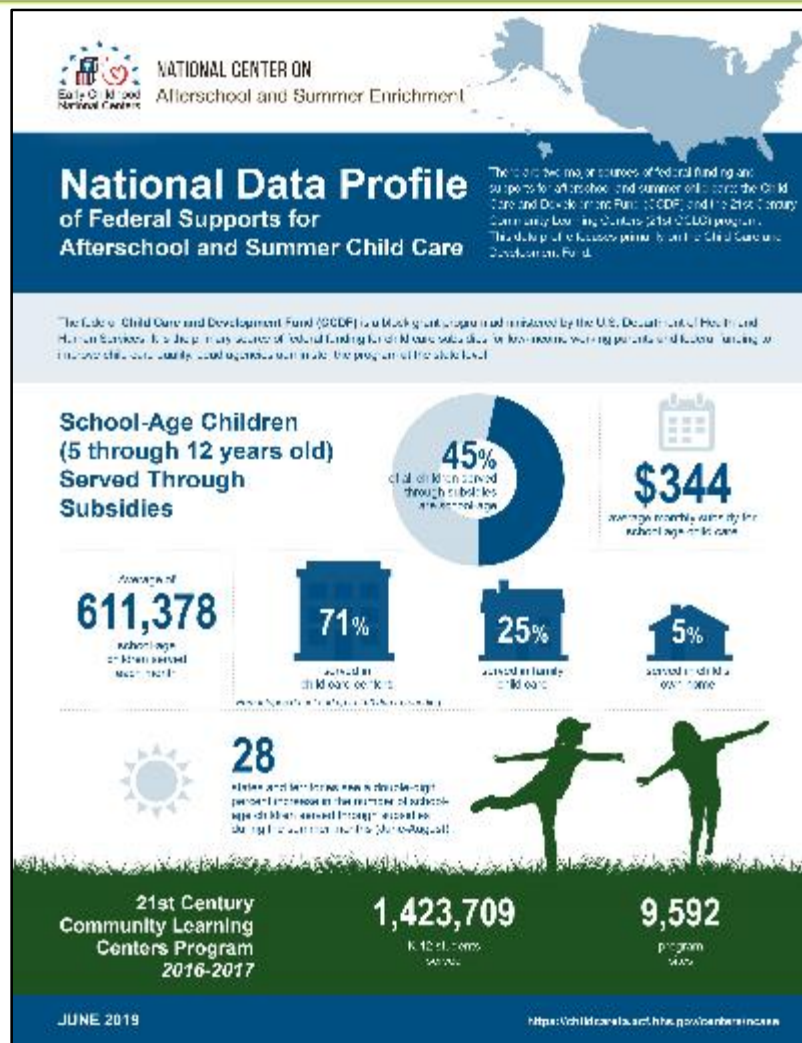
...and...

- ◆ Why are you here today?



Working Definitions

- ◆ **School-Age care** refers to the age of children served; differentiated from infant, toddler, and preschool care.
- ◆ **Out-of-School Time** refers to programming outside of the school day, including before and after school, summer, weekend, and family or center-based child care.
- ◆ Our National Center name is **Afterschool and Summer Enrichment**, and we use this interchangeably with Out-of-School Time.



School-Age Data Profiles Database

<https://childcareta.acf.hhs.gov/school-age-profiles>

Unique Issues to Address for OST Programs

- ◆ Part-time staff
- ◆ Turnover rates
- ◆ Building capacity of leaders
- ◆ Needs of license-exempt programs
- ◆ Instructional practices
- ◆ Summer requires separate focus

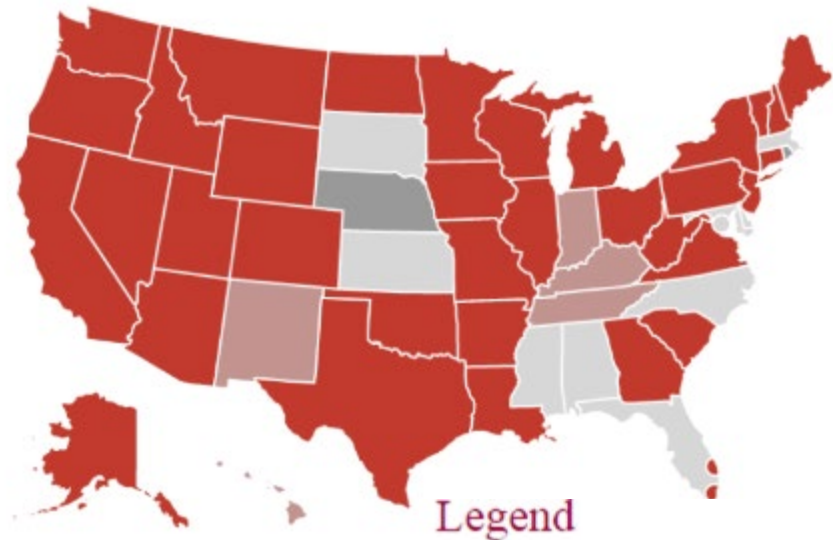


What do we Know About the Workforce?

State Registries: Data to Drive Decisions

National Workforce
Registry
Alliance

<http://www.registryalliance.org/index.php>



Legend
Alliance Member with a Registry
Not Alliance Member, has a Registry
Alliance Member, no Registry
Not Alliance Member, no Registry

What is School-Age Quality?

- ◆ Low child-to-staff ratios
- ◆ A positive social-emotional climate
- ◆ A clear program structure/supervision
- ◆ Autonomy and choice for children and youth
- ◆ Continuity with the regular school day
- ◆ Strong staff management and business practices
- ◆ Data collection and evaluation

Afterschool Alliance (2013).

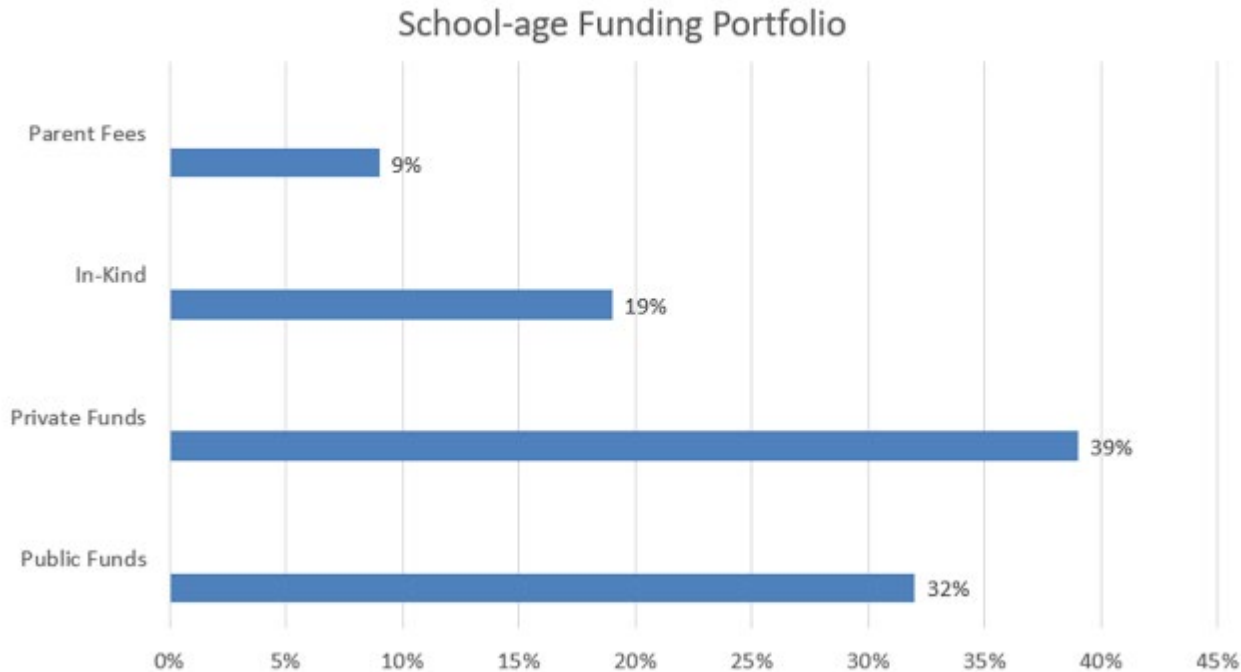
Costs of Providing Quality: Out-of-School Time Care

Costs vary widely based on:

- ◆ Hours/days of operation
- ◆ Ages served
- ◆ Needs and interests of children
- ◆ Location/type of program
- ◆ Activities offered
- ◆ Staff/youth ratio
- ◆ Available resources

Grossman, et al. (2009).

Wallace Foundation Study: The Cost of Quality of Out-of-School Time Programs



Grossman, et al. (2009).

Major Federal Funding for School-Age Child Care

- ◆ CCDF
- ◆ 21st Century Community Learning Centers
- ◆ Temporary Assistance for Needy Families (TANF)
- ◆ Federal Food and Nutrition Programs (National School Lunch Program, Child and Adult Care Food Program, Summer Food Service Program, and School Breakfast)

Other Possible Funds to Support SACC

- ◆ Title I, Title IV A of Every Student Succeeds Act (ESSA)
- ◆ Funds for special populations (English Language Learners (ELL), migratory children, homeless youth, foster youth)
- ◆ AmeriCorps, AmeriCorps VISTA
- ◆ Community development funds (Promise Neighborhoods, Community Development Block Grants (CDBG))
- ◆ Social Services Block Grant (Day Care – Children)

Other Possible Funds to Support SACC

- ◆ Health programs (Environmental Protection Agency (EPA), child abuse prevention, personal responsibility, physical education)
- ◆ Funds to support working families (Workforce Innovation & Opportunities Act, family literacy)
- ◆ Juvenile Justice/Delinquency Prevention
- ◆ Museums, parks, libraries

21st Century Community Learning Centers (21st CCLC)

Purpose

Academic enrichment during non-school hours for children, particularly in high-poverty, low-performing schools

Funding

\$1.2 Billion State formula grants in FY19, sub-granted to eligible schools, community-based organizations, or other public/private entities

Comparing CCDF with 21st CCLC

- ◆ CCDF:
 - Block grants to states, which designate lead agency to administer program
 - Eligibility determined at the family level
 - Most families pay a co-payment
- ◆ 21st CCLC:
 - Funds given to SEAs based on their share of Title I funding; states then administer competitive grant program
 - Eligibility determined at the program site level, not at the family level
 - Programs allowed to charge a fee for participation but must offer sliding scale (cannot hinder a child's ability to participate)

21st Century Community Learning Centers by the Numbers (2016-2017)

- ◆ 1,423,709 students served during the school year
 - PreK-5th grade: 636,559
 - 6th-12th grade: 787,150
- ◆ Additional participation figures:
 - 303,013 summer participants
 - 286,039 adult/family member participants
- ◆ 9,592 program sites
 - Most (82%) sites are public school districts

U.S. Department of Education. (2018).

State Approaches: Benefits to Combining Funds for SACC

- ◆ Create grant programs that draw from multiple sources
- ◆ Transfer funds across related agencies or programs
- ◆ Use quality/professional development funds from multiple programs to contract with one comprehensive PD provider

Challenges in Combining Funds

- ◆ Funding streams are often administered by different state agencies
- ◆ 21st CCLC programs may not be licensed
- ◆ A majority of 21st CCLC programs do not charge participation fees
- ◆ Structural and philosophical differences between the two programs

Challenges in Combining Funds

- ◆ Unsure of eligibility requirements/license exemption
- ◆ Program lacks capacity to administer
- ◆ Reimbursement amount not worth the effort
- ◆ Not sure if CCDF can be combined with 21st CCLC or other federal funds
- ◆ Program does not charge fees

CCDF and 21st CCLC Common Topics: Facilities



CCDF and 21st CCLC Common Topics: Workforce



Let's Talk About It: How can you assist in overcoming program challenges for SACC?



New Jersey Example of Effective Collaboration



References

Afterschool Alliance. 2014. American After 3PM: Afterschool Programs in Demand. <https://childcareta.acf.hhs.gov/ncase-resource-library/america-after-3-pm-afterschool-programs-demand>

Afterschool Alliance. 2013. Evaluations backgrounder: A summary of formal evaluations of afterschool programs' impact on academics, behavior, safety and family life. <https://childcareta.acf.hhs.gov/ncase-resource-library/evaluations-backgrounder-summary-formal-evaluations-afterschool-programs>

Grossman, J.B., Lind, C., Hayes, C., MckMaken, J., Gersick, A. 2009. The Cost of Quality Out-of-School Time Programs. Wallace Foundation. <https://childcareta.acf.hhs.gov/ncase-resource-library/cost-quality-out-school-time-programs>

U.S. Department of Education. (2018). *21st Century Community Learning Centers (21st CCLC) analytic support for evaluation and program monitoring: An overview of the 21st CCLC performance data: 2016–17 (13th report)*. Washington, DC.

Resources

Coordinating Child Care and Development Fund and 21st Century Community Learning Center Services

<https://childcareta.acf.hhs.gov/sites/default/files/public/coordinating-ccdf-21stcclc-services.pdf>

The Cost of Quality: Out-of-School Time Cost Calculator

<https://childcareta.acf.hhs.gov/ncase-resource-library/cost-quality-out-school-time-cost-calculator>

NCASE School-age Data Profiles Database

<https://childcareta.acf.hhs.gov/event/new-database-collection-school-age-data-profiles>

NCASE website

<https://childcareta.acf.hhs.gov/centers/ncase>

Wallen, M., Hubbard, A. 2013. Blending and Braiding Early Childhood Program Funding Streams Toolkit. <https://www.theounce.org/wp-content/uploads/2017/03/NPT-Blended-Funding-Toolkit.pdf>



State & Territory CCDF Administrators Meeting

July 30–August 1, 2019 • Hyatt Regency Crystal City • Arlington, Virginia

Thank You



Early Childhood
National Centers